

INDUSTRIAL FOR LEASE

#10 10 Wrangler Pl Janet AB

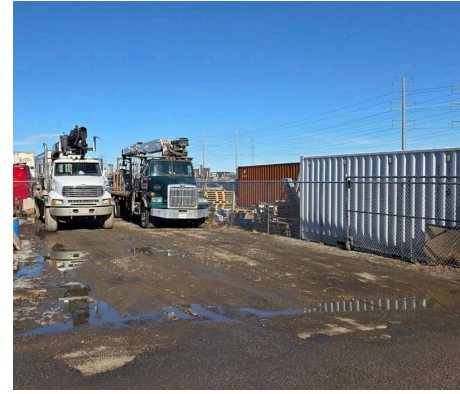
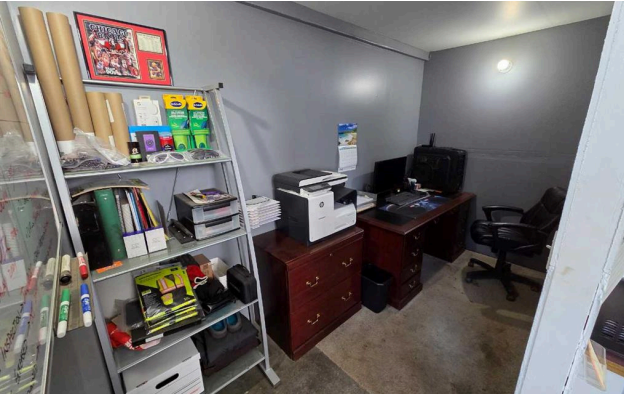
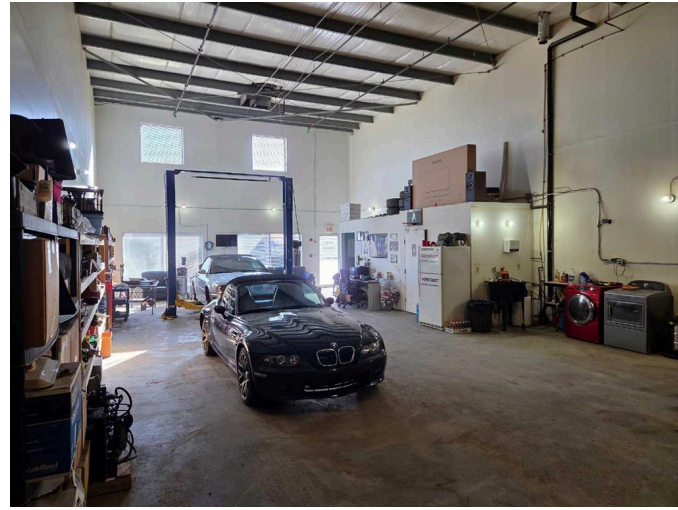


- ± 3,000 SF industrial bay
- ± 2,400 SF fenced in storage yard included
- Located off Glenmmore Trail & minutes from Stoney Trail
- Open warehouse with built out office and 1 washroom
- 0.70 acre lot size
- 12' x 14' overhead loading door
- Abundance of natural light

Ria Mavrikos, Associate
Commercial Sales & Leasing
403.875.0886
mavrikoscre@gmail.com



FOR LEASE | INDUSTRIAL SPACE IN JANET



PROPERTY DETAILS

SPACE TYPE
Industrial/Office

AVAILABLE SPACE
± 3,000 sq ft industrial bay
± 2,400 sq ft fenced yard

YEAR BUILT
2008

POWER
100 Amps

ZONING
DC-76



[CLICK HERE FOR
CURRENT DC-76 USES](#)



LEASE RATE
\$16.00 PSF

OPERATING COSTS
\$7.28 PSF

LEASE TERM
24 MONTHS - negotiable

Ria Mavrikos, Associate
Commercial Sales & Leasing
403.875.0886
mavrikoscre@gmail.com

RE/MAX Key
1202, 20 Dawson Wharf Mount
T1X 2Z5 Chestermere AB
587.316.2000

The information contained herein was obtained from sources deemed to be reliable and is believed to be true; it has not been verified and as such, cannot be warranted nor form a part of any future contract. All measurements need to be independently verified by the purchaser.

RE/MAX KEY

www.remaxkey.ca